

ENDOORS

CATALOGUE EDITION
MARCH 2026

ENDOORS' history

Endoors srl. was established in 2005 to operate in the production of fire rated metallic and multipurpose doors and the trade of related products. Having established a national presence, the company has steadily expanded into foreign markets. Endoors' staff includes individuals with previous experience in both the commercial and manufacturing sectors of this industry. This ensures a comprehensive knowledge of products and regulations, and a familiarity with the market and customer expectations. This has become and shall continue to be the capital of Endoors as a company.



Factory and warehouse of Endoors srl.
43016 Polesine Zibello / PARMA - ITALY

ENDOORS' compliance to standards and prescriptions



The forthcoming harmonisation of fire door standards in EU has prompted Endoors srl. to meet from the requirements of the European Construction Products Regulation (EU) No 305/2011 and to the new regulation (EU) 2024/3110 which came into force and is applicable from 8 January 2026.

All the components of the doors are rigorously certified and CE marked as far as prescribed by the new regulations and the latest standards. All the Endoors srl. production is already tested according to EN 1634-1 "Fire resistance tests for door and shutter assemblies" and EN 13501-2 "Fire classification of construction products and building elements".

These features conform with the intentions and principles that underlie the CE marking procedure to the fire doors for use on interiors as it has been done for the fire doors for use on exteriors and the large industrial fire doors with the standard EN 16034 "Pedestrian doorsets, industrial, commercial, garage doors and openable windows – Product standard, performance characteristics – Fire resistance and/or smoke control characteristics" approved and prepared by CEN/TC 33 the secretariat of which is held by AFNOR by mandate of the European Commission supporting essential requirements of EU Directives.

ENDOORS' products



The Endoors srl. range of products comprises following metallic shutters:

REVERSIBLE DOORS IN STANDARD SIZES single leaf EI2 60, EI2 120 and Multipurpose without vision panels for use on interiors for the stockselling dealers.

COSTUMIZED DOORS IN STANDARD AND SPECIAL DIMENSIONS single and double leaf EI2 60, EI2 120 and Multipurpose, for use on interiors or CE marked for exteriors with or without vision panels, with different frames and optional accessories or colors for the dealers or installers of doors in specific construction sites.

STAINLESS STEEL DOORS, SHAFT DOORS, WOODEN IMITATION DOORS, SOUND REDUCTION DOORS, DOORS FOR INSTALLATION ON PLASTERBOARD PARTITIONS single and double leaf EI2 60, EI2 120 and Multipurpose.

SLIDING HORIZONTAL INDUSTRIAL FIRE DOORS MODEL "GRUPO" single and double leaf EI2 60 – EI2 90 - EI2 120 – EI2 180 – EI2 240 CE marked.

SLIDING VERTICAL FIRE DOORS single leaf EI2 120 CE marked.

LARGE HINGED INDUSTRIAL FIRE DOORS MODEL "MAGNUM" single and double leaf EI2 60 - EI2 120 CE marked.

GLAZED DOORS with steel or aluminium profiles single and double leaf EI2 30 - EI2 60 - EI2 90 - EI2 120 for use on interiors and CE marked for exteriors.

AROMORED DOORS FOR APARTMENTS also fire rated (Separate catalogue)

ENDOORS' certificates and tests

Endoors company in addition to the Italian certificates has obtained until the beginning of 2026 several certifications which allow the sale of fire rated shutters for civil, public, commercial and industrial buildings in various countries of the world.



Following the list of the main awards currently applicable to Endoors' products.

- **ITALIAN** homologations released by the Italian Ministry of Interiors obtained by testing doors according to Italian standard UNI 9723 and FA1 extension sheet.
- **EUROPEAN** certificates according to standards EN 13501-2 and EN 1634-1 obtained by testing doors in laboratories EFACTIS / France, APPLUS / Spain and ISTITUTO GIORDANO / Italy, valid in all european countries for products CE marked for outdoor installation and accepted in some countries also for indoor installation. Specific certificates for indoor installation have been for:
 - **ROMANIA** certificates according to local regulations for indoor use.
 - **HUNGARY** certificates according to local regulations for indoor use.
 - **SLOVAKIA** certificates according to local regulations for indoor use.
 - **SLOVENIA** certificates according to local regulations for indoor use (in progress)
 - **BULGARIA** certificates according to local regulations for indoor use (in progress)
- **AMERICAN UL** certificates according to UL 10-B and UL 10-C obtained by testing doors in accredited UL laboratory. More models and solutions in progress of testing during 2026.
- Possession of the above-mentioned certificates allows sales in various additional countries. Endoors is currently shipping products to most countries around the Mediterranean sea like Croatia, Albania, Greece, Malta, Cyprus, Turkey, Lebanon, Egypt, Libya, Algeria, Morocco, Spain, France. Endoors exports also to additional countries like Estonia, Georgia, Saudi Arabia, UAE Dubai, Nigeria, Argentina, Uruguay, Equador, Nicaragua.



Destructive tests beyond limit



...A STEP TO A SAFER WORLD

GENERAL IMPORTANT NOTICE

All information in this catalogue could change without notice. Binding information have to be specifically reconfirmed by writing.

The client, before ordering the products, is supposed to verify the adequacy of the certificates, homologations, measures and conformity of the products and technical features to the regulations, national and local laws, both general or specific for the fire rating in the door's destination place, according to the purpose of the building, the use in escape ways and the local climate.

The product must be protected from the natural agents, especially the fire rated glasses deteriorate if exposed to the sun or to the water even if still in the factory's packing and they consequently lose the guarantee.

According to the laws of many countries all doors used for exits, emergency or escape ways should have a minimum height of 2000 mm net passage.

Commercial Fire Doors Single Leaf with "Z" shaped frame

Door EI2 60 – EI2 120 single leaf

Door metallic fire rated 60 or 120 minutes single leaf **REVERSIBLE** or **DX-SX HANDED** models, supplied assembled with high resistance steel frame on 4 sides with clamps to bend open and holes for fixing with expansion screws, 1 hinge with spring and 1 bearing hinge, lower side of frame removable after installation and leaf of total thickness 53 mm (EI2 60) or 63 mm (EI2 120) of galvanized double steel sheet with fire rating core and thermo-expanding gasket between

frame and leaf, 1 bolt (EI2 60) and 2 bolts (EI2 120) at hinge side, painted with epoxy-polyester powders oven hardened embossed finishing RAL 9010 tone, CE marked lock with tongue and turns, black safety handle with steel core, plates and Patent key, conformity mark metallic label, sticker with data, booklet for installation use and maintenance, copy of classification report and conformity declaration upon request.

Door multipurpose single leaf

Door metallic multipurpose single leaf **REVERSIBLE** or **DX-SX HANDED** models, supplied assembled with high resistance steel frame on 4 sides with clamps to bend open and holes for fixing with expansion screws, 2 bearing hinges of reduced dimensions mm 98 x 16,5 Ø, lower side of frame removable after installation and leaf of total thickness 53 mm of galvanized double steel sheet with fiber honeycomb core, painted with epoxy-polyester powders oven hardened

embossed finishing RAL 9010 tone (some reversible models available also only galvanized or with pre-coated finishing and polystyrene core), CE marked lock with tongue and turns, black safety handle of plastic, plates and Patent key, sticker with data, booklet for installation use and maintenance. Door available also with ventilation holes of triangular shape symmetric at the 4 corners of leaf.



Alternative fixing with expansion screws

Removable sill

Horizontal section of reversible + handed doors



Standard finishing ral 9010 embossed



Ventilation holes at the 4 corners, optionals on multipurpose

Vertical section of reversible doors

Vertical section of handed doors

Reversible doors

MAIN CHARACTERISTICS AND VARIABLES

Doors made right- or left-handed with welded frame on three sides and a sill removable after installation. They are available for interior use and also for exterior use CE marked.

Doors made "reversible" for both right- and left-handed opening by reversing them 180°. They have a non-welded frame on four sides, and the portion of frame that comes out below can be removed after installation. Available single leaf in standard color RAL 9010 and only standard sizes for interior use and without specific smoke control Sa or S200 certification.

Alternative frames to the doors right- or left-handed see page 8.

Standard accessories always included in the prices listed on page 6.

Optionals accessories at pages 10 to 15.

Order dimensions are always expressed as Lfm (wall opening width) x Hfm (wall opening height). To calculate the clear opening or external frame dimensions see the data in the drawings. The opening directions (hands) are always intended to push, opposite to DIN.

Doors with "Z" frame are supplied already assembled and accessories + optionals supplied separately, some of them with preparation on door.

Maximum dimensions vary depending on the resistance grade and the certificate considered and variable depending on the country of destination, however never more than 1300 mm wide and 2400-2700 mm high. Above these dimensions large industrial fire doors model Magnum must be used, see following pages.

Commercial Fire Doors Double Leaf with "Z" shaped frame

Door EI2 60 – EI2 120 double leaf

Door metallic fire rated 60 or 120 minutes double leaf DX-SX **HANDED** model, supplied assembled or unassembled depending on dimensions, with high resistance steel frame on 3 sides with clamps to bend open and holes for fixing with expansion screws, 2 hinges with spring and 2 bearing hinges, lower side of frame removable after installation and leaf of total thickness 53 mm (EI2 60) or 63 mm (EI2 120) of galvanized double steel sheet with fire rating core and thermo-expanding gasket between frame and leaves, 2 bolts

(EI2 60) and 4 bolts (EI2 120) at hinge sides, painted with epoxy-polyester powders oven hardened embossed finishing RAL 9010 tone, CE marked lock with tongue and turns in main leaf and mortise-lock with self closing device with rods for the upper and lower closing of secondary leaf, floor socket, black safety handle with steel core, closing regulator, plates and Patent key, conformity mark metallic label, sticker with data, booklet for installation use and maintenance, copy of classification report and conformity declaration upon request.

Door multipurpose double leaf

Door metallic multipurpose double leaf DX-SX **HANDED** model, supplied assembled or unassembled depending on dimensions, with high resistance steel frame on 3 sides with clamps to bend open and holes for fixing with expansion screws, 4 bearing hinges of reduced dimensions mm 98 x 16,5 Ø, lower side of frame removable after installation and leaves of total thickness 53 mm of galvanized double steel sheet with fiber honeycomb core, painted with epoxy-polyester

powders oven hardened embossed finishing RAL 9010 tone, CE marked lock with tongue and turns in main leaf and mortise lock with self closing device with rods for the upper and lower closing of secondary leaf, floor socket, black safety handle of plastic, plates and Patent key, sticker with data, booklet for installation use and maintenance. Door available also with ventilation holes of triangular shape symmetric at the 4 corners.



Alternative fixing with expansion screws

Horizontal section

MAIN CHARACTERISTICS AND VARIABLES
Doors made right- or left-handed with frame on three sides and a sill removable after installation. They are available for interior use and also for exterior use if requested CE marked.
Alternative frames see page 8.
Standard accessories always included in the prices listed at page 6.
Optionals accessories at pages 10 to 15.
Order dimensions are always expressed as Lfm (wall opening width) x Hfm (wall opening height). To calculate the clear opening or external frame dimensions see the data in the drawings. The opening directions (hands) are always related to the main leaf and intended to push, opposite to DIN.
Doors of double leaf with "Z" frame are normally supplied already assembled up to width 1200 and unassembled for wider dimensions and accessories + optionals supplied separately, some of them with preparation on door.
Maximum dimensions vary depending on the resistance grade and the certificate considered and variable depending on the country of destination, however never more than 2600 mm wide and 2400-2700 mm high. Above these dimensions large industrial fire doors model Magnum must be used, see following pages.

Vertical section

For different fixing systems see "Alternative frames" in next section. It is duty of the client to check that the certificates which Endoors srl. will supply with the doors are accepted in the country of destination and that the doors respect the local rules about net passage dimensions and/or other prescriptions. In case of doubt ask details before to place the order. Dimensional tolerances +/- 3 mm. All information in this catalogue could change without notice. Binding information have to be specifically reconfirmed by writing.



Standard finishing ral 9010 embossed

Standard Accessories

All doors are always supplied with following accessories included in the prices.



Handle and plate fire rated with steel core
To DIN 18255 standard



Handle and plate multipurpose



"Patent" key with plastic insert fire rated and multipurpose



Locks fire rated and multipurpose
CE marked according to standard EN 12209, standard lock (left) and anti-panic lock (right) for use with anti-panic crossbars



Hinge multipurpose
mm 98 x 16,5 Ø



Hinges fire rated
CE marked according to standard EN 1935 Hinge with spring (left) and bearing hinge (right)



Bolts fire rated
Bolts on leaf and strikes in the frame



Self expanding gasket fire rated
For retaining the hot smokes



Conformity mark fire rated
Metallic label prescribed by law



Clamps fire rated and multipurpose
To bend open for the fastening with mortar



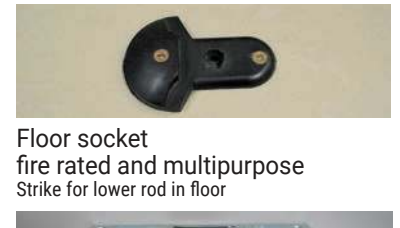
Additionally with the double leaf doors:



Closing regulator fire rated
CE marked according to standard EN 1158 in closed position (left) and open (right)



Upper self-blocking device in secondary leaves
Blocks the secondary leaf in closed position



Floor socket fire rated and multipurpose
Strike for lower rod in floor



Lock for secondary leaf fire rated

Dimensions of corner "Z" frame

Multipurpose and EI2 60 frame

EI2 120 frame

Door Swing Clearances with corner “Z” frame

Single leaf doors

A = 42 mm

B → Doors 60 min. + Multipurpose = 19 mm
B → Doors 120 min. = 29 mm

C = A + B

D → TWIST = 110 mm
D → INNOVA = 80 mm
D → SLASH = 75 mm = < 80 mm
D → TOUCH BAR = 72 mm = < 80 mm
D → 970SR = 100 mm
D → INOX = 100 mm
D → Std. handle = 70 mm = < 80 mm

X

$$X = Lfm - C - D - A$$

Double leaf doors

A = 42 mm

B → Doors 60 min. + Multipurpose = 19 mm
B → Doors 120 min. = 29 mm

C = A + B

D → TWIST = 110 mm
D → INNOVA = 80 mm
D → SLASH = 75 mm = < 80 mm
D → TOUCH BAR = 72 mm = < 80 mm
D → 970SR = 100 mm
D → INOX = 100 mm
D → Std. handle = 70 mm = < 80 mm

Y

$$Y = Lfm - (2 \times C) - (2 \times D)$$

Alternative Frames

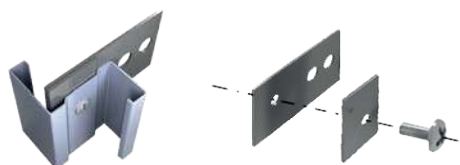
Fire doors with tubular BLOCK FRAME for flat support/corridors

Construction like the 1 or 2 leaf handed type fire doors described in the previous pages but with frame having flat support on 3 sides with fixing plates for the "corridor" installation painted with epoxy polyester powders with the same finish and RAL shade as the leaves. The plugs for fixing to the wall are not included. Doors certified according to the European standard EN 1634.



Fire doors with Z FRAME + KIT 2 for plasterboard partitions

Construction like the 1 or 2 leaf handed type fire doors described in the previous pages with corner type "Z" frame + "KIT 2" consisting of a series of components to be fixed to the frame before installing the door for subsequent fixing of the complete door to the wall. The plates protruding from the frame can be covered after door's installation with an additional plasterboard sheet or with some frame extensions as shown in the drawings below. Doors certified according to the European standard EN 1634. The frame dimensions are the same to those of Z frame at pages 4 + 5.



With plasterboard screw-cover

With small frame extension

With embracing-telescopic frame extension

Fire doors with EMBRACING FRAME for plasterboard partitions

Construction like the 1 or 2 leaf handed type fire doors described in the previous pages but certified and approved with embracing frame 1,5 mm. thick galvanized steel profile for total wall thickness of 125 or 150 or 200 mm painted with epoxy polyester powders with the same finish and RAL shade as the leaves. The supply includes fixing screws and caps for closing the holes of the frame. Doors certified according to the European standard EN 1634.



Stainless Steel Doors and Shaft Doors



Fire doors completely made of AISI 316 stainless steel

Fire doors built and certified fireproof EI2 120 single or double leaf right or left handed, with block frame and leaf 63 mm of thickness fully made of high-resistance AISI 316 stainless steel, sill to remove after installation, foldable clamps, bearing hinges made of stainless steel, 120 minutes fire-fighting internal pack, self-expanding gaskets, stainless steel bolts on the hinge sides, CE certified locks with stainless steel faceplate with latch and throws, pair of safety handles with plates and cylinder hole in stainless steel, compulsorily equipped with overhead door closers (hinges are not equipped with self closing spring), metallic plate with conformity mark, sticker with data, booklet with installation, use and maintenance instructions, copy of classification report and declaration of conformity upon request.



Metallic fire rated shaft doors

Door metallic fire rated, single or double leaf **REVERSIBLE model**, supplied assembled with high resistance steel frame on 4 sides with foldable clamps and holes for fixing with expansion screws, 1 hinge with spring and 1 bearing hinge on each leaf, and total thickness 53 mm (EI2 60) or 63 mm (EI2 120) of galvanized double steel sheet with fire rating core and thermo-expanding gasket between frame and leaf, painted with epoxy-polyester powders oven hardened embossed finishing RAL 9010 tone, CE marked lock with latch and throws, with square / triangle key, or black safety handle with steel core upon request, conformity mark metallic label, sticker with data, booklet for installation use and maintenance, copy of classification report and conformity declaration upon demand



Optional Accessories

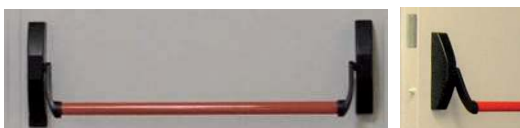
Panic bars

Certified and CE marked supplied with instructions for use and maintenance according to the current European standard UNI EN 1125. There are 7 models available for different needs:

TWIST-TECNO model, lever type, black base, natural aluminium coloured bar, crossbar sold and used for years due to the convenient price, easy assembly, perfect functioning. CE marked 376B1422AA. 110 mm jutting.



970 SR model, lever type, black base, red bar, relatively new handle, very reliable and practical as an alternative to the Twist model due to the colour of the bar. CE marked 376B1322AA. 100 mm jutting.



INNOVA model, lever type, black base, natural aluminium coloured bar, NEW, in fact, despite being a lever, it protrudes as much as the push models, therefore it is an alternative at a lower cost. CE marked 376B1422AA. 80 mm jutting.



SLASH-TECNO PLUS model, push type, black base, natural aluminium coloured bar, handle used when a small footprint is needed on doors that only open to 90°. CE marked 376B1322BA. 75 mm jutting.



TOUCH BAR model, push type, black base, red bar, crossbar used when a small footprint is needed on doors that open at 90°, alternative to the Slash model due to the colour of the bar. CE marked 0425 CISA prod. 72 mm jutting.



ENDURANCE model, push type, stainless steel-like bar and base, very elegant and good functioning, handle used when a small footprint is needed on doors that open only 90°. Marked CE377B1422BA. 63 mm jutting.



INOX model, lever type, stainless steel base, stainless steel bar, crossbar made entirely of stainless steel, elegant, highly reliable, easy to assemble and with perfect functioning. CE marked 37611322A. 100 mm jutting.



Cylinders

Complete or half cylinders, all different or uniformed to replace the insertion with Patent key supplied as standard.



Doorclosers

Certified and CE marked, delivered with installation instructions and servicing instructions under existing legislation European standard EN 1154. Doorclosers can be installed also lateron.



Electromagnets

To keep the doors normally open (in picture) or to keep them closed, low voltage operation and conform to standard CE 1155. It is necessary the connection to control units.

Vision Panels and Louvers

Vision panels EI2 60 and EI2 120

Fire rated vision panels, not openable, delivered installed in our standard sizes. Glasses for internal use only, they deteriorate if installed outdoors. Visible glazing bead fixing screws. It is preferable to equip leaves with vision panels with openings greater than 0.15 m2 with door closers. EI2 60 glass thickness mm 23-25, EI2 120 glass thickness mm 50-53.



Multipurpose openings, louvers, fanlights

Laminated vision panels and louvers, not openable, delivered installed in our standard sizes. Visible fixing screws. The use of laminated safety glass is foreseen. Glass installed at the top on door minimum width L 700. Grids installed at the bottom unless otherwise specified by the customer when ordering a door with minimum width L 800. It is possible to insert more glasses or louvers on the same door. Fanlights in perforated sheet metal for construction site doors.





Upper profile for reversible doors

To cover the portion of the wall above the door and create perimeter uniformity with the 2 vertical jambs.



Stainless steel handle

A stainless-steel handle, if a tone of elegance is needed in particular environments.



Stainless steel push plates and kick plates

Made in stainless steel. Ideal for qualifying and strengthening heavy traffic doors.



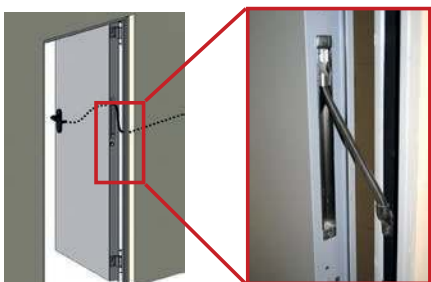
Third hinge

Standard in doors with a height greater than 240 cm and available as an option for lower heights.



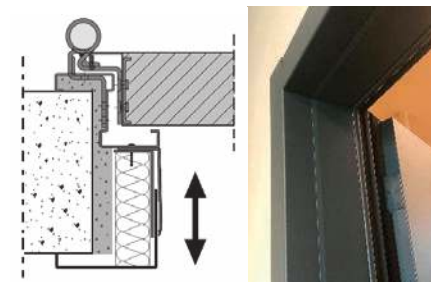
Mobile thresholds (drop down seal)

Guillotine operation by closing the door. 2 models available: it can be either applied on the surface of the push side of the leaf after the door installation, or it can be integrated into the leaf for a more professional solution.



Ledge gaskets

Elastic gaskets with intumescent graphite core covered with PE film and adhesive tape for environmental, acoustic and smoke control sealing features and for the absorption of the leaf impact against the frame when closing.



Telescopic frame extensions for corner frame

Made of galvanized and painted steel profile of the same colour as the door and to be screwed to its corner frame. They complete the door by enveloping the entire wall thickness.

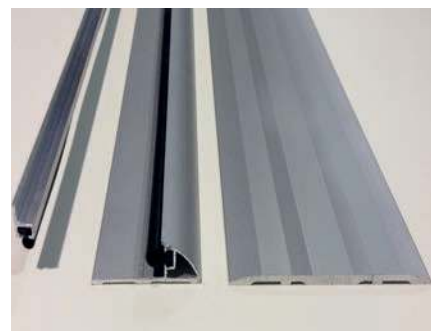


SCA - Electric locks

Electric lock fire rated certified types FAIL SECURE or FAIL SAFE for access control purposes supplied installed on single leaf doors or main leaf of double leaf doors on fire rated or multipurpose doors with working tension 12-24 V AC/ DC, including wiring inside the door-leaf from lock to hinge side, cable foldaway between the leaf and the frame, electrical connection terminal outside frame at 50 cm. from the floor. Combinable with crossbars for panic push function or handles with panic pull function and with external card readers, buttons or other consent electrical timed power supply devices supplied by the customer.

Sound reduction kits

The sound reduction doors are the fire rated EI2 120 doors equipped with sound-reduction kits (picture) composed by a ground seal and rubber gaskets on the door. Maximum performance available 42 dB on single leaf doors and 34,5 dB on double leaf doors. To achieve the desired noise reduction level the installation must be done with care and maintenance performed regularly.



American Standard UL 10B - UL 10C Single Leaf Doors

Description

Door metallic fire rated 120 minutes according to the standard ANSI/UL "Fire Tests of Door Assemblies" single leaf DX-SX handed model, supplied assembled with high resistance steel frame on 3 sides with clamps to bend open and/or holes for fixing with expansion screws, 1 hinge with spring and 1 bearing hinge, lower side of frame removable after installation and leaf of total thickness 53 mm of galvanised double steel sheet with fire rating core and thermo expanding gaskets between frame and leaf, bolts at hinge side, painted with epoxy-polyester powders oven hardened embossed finishing RAL 9010 tone, lock with tongue and turns, black safety handle with steel core and plates, patent key, UL mark metallic label, sticker with data, booklet for installation use and maintenance.



Fire rated doors single leaf are available with 3 different frames:

Z FRAME **UL 10 B 120 MINUTES**
 UL 10 B 180 MINUTES
 UL 10 C 120 MINUTES

Doorset with "Z" shaped frame to install on corner of wall.
Maximum dimensions Lfm 1090-1140 x Hfm 2150-2190
Specify hand push right = DX or push left = SX

Options:

Different color, stainless steel handles and plates, stainless steel hinges without self-closing spring (overhead doorcloser becomes compulsory), wall embracing telescopic frame extension, any other UL listed technically fittable accessory.

Block frame UL 10 B 120 minutes

Doorset for mid-wall installations or in corridors.
Order doors specifying dimensions Lfm x Hfm in cm. or Lr x Hr
Maximum dimension of door
Lfm 990 x Hfm 2150 = Lr 1050 x Hr 2180
Specify hand push right = DX or push left = SX

Options:

Different color, stainless steel handles and plates, emergency crossbar rim type, any other UL listed technically fittable accessory

Mini-Block frame UL 10 B 120 minutes

Doorset for mid-wall installations with small frame.
Order doors specifying dimensions Lfm x Hfm in cm. or Lr x Hr
Maximum dimension of door
Lfm 1100 x Hfm 2150 = Lr 1167 x Hr 2188
Specify hand push right = DX or push left = SX

Options:

Different color, stainless steel handles and plates, any other UL listed technically fittable accessory

American Standard UL 10-B Double Leaf Doors

Description

Door metallic fire rated 120 minutes according to the standard ANSI/UL "Fire Tests of Door Assemblies" double leaf DX-SX handed model, supplied assembled or unassembled, with high resistance steel frame on 3 sides with clamps to bend open and/or holes for fixing with expansion screws, 2 hinges with spring and 2 bearing hinges, lower side of frame removable after installation and leaf of total thickness 63 mm of galvanised double steel sheet with fire rating core and thermo expanding gaskets between frame and leaf, bolts at both sides, painted with epoxy-polyester powders oven hardened embossed finishing RAL 9010 tone, lock with tongue and turns in main leaf and mortise-lock with self closing device with rods for the upper and lower closing of secondary leaf, floor socket, black safety handle with steel core and plates, patent key, closing regulator, UL mark metallic label, sticker with data, booklet for installation use and maintenance.

Z frame UL 10 B 120 minutes

Doorset with "Z" shaped frame to install on corner of wall.
Maximum dimension of door Lfm 1500 (750+750) x Hfm 2150
Specify hand of main leaf push right = DX or push left = SX

Options:

Different color, stainless steel handles and plates, stainless steel hinges without self-closing spring (overhead doorclosers becomes compulsory), wall embracing telescopic frame extension, any other UL listed technically fittable accessory

Accessories for UL Fire Rated Doorsets



Black handle with steel core (standard)



Stainless steel handle



Bearing hinge (standard)



Hinge with spring (standard)



Stainless steel hinge



Emergency crossbar rim type



Closing regulator on double leaf door (standard)



Overhead doorcloser

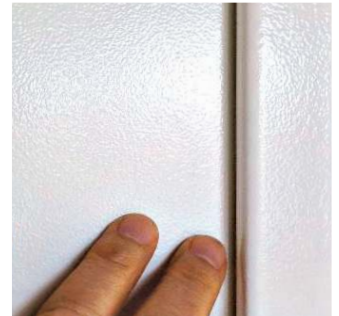


Section of wall embracing telescopic frame extension

Finishes

Standard finishing

Our doors are delivered with leaf's steel sheet and frame painted with epoxy-polyester powders oven hardened at 180 °C - RAL 9010 tone embossed finishing.



Other RAL tones available



Special paintings with epoxy-polyester powders RAL range

Painting with epoxy-polyester powders oven hardened semi brilliant embossed finishing or matt textured finishing suitable on external environments, for leaf and frame. Most of the RAL tones are available except the pearly and the phosphorescent. Finishing suitable for interiors only, they fade if exposed to direct sun.



On the left matt textured version, on the right semi brilliant goffered version, depending on the intensity or incidence of the light they have a different yield.

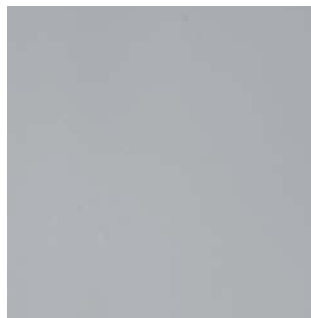
PVC coatings with film to peel-off

PVC imitation aluminium and stainless steel

Use of steel sheet coated with PVC imitation aluminium and stainless steel with protection film to peel off. Finishing suitable for interiors. 2 colours are available with different finishing: F16 Aluminium smooth glossy, F12 Stainless steel smooth glossy (colours with print tolerance, in doubt request samples of PVC). Maximum width wall opening L 1090 per leaf. Frame and profiles for windows painted with RAL 9007 smooth.



PVC F12 Stainless steel smooth glossy



PVC F16 Aluminium smooth glossy



Example of F12 PVC stainless steel imitation

Digital print

Digital photo print – drawings – notices –

Request us the catalogue or the file of available decorations or supply us the file with the desired decoration and we will submit you a personalized proposal.



Digital photo print – drawings – notices – fantasies – examples

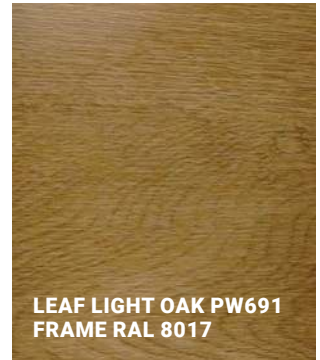
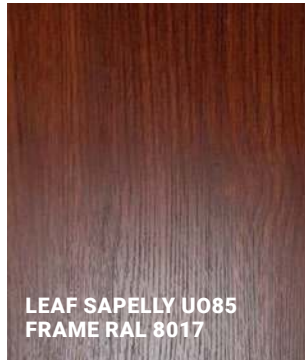
Finishes

PVC imitation wood

Use of steel sheet coated with PVC imitation wood and protection film to peel off. Finishing suitable for interiors. The 4 types of wood illustrated in this catalogue are available (colours with print tolerance, in doubt request samples of PVC). Maximum width wall opening L 1090 per leaf. Frame and profiles for windows painted with RAL 8017 matt texturized surface.

By the years the PVC coating increased its quality and some finishes have veins in relief, looking like real wood from close sight.

Always check availability and timing of the desired finish before ordering finishings of this type before ordering wood imitation doors!



Sliding Industrial Fire Doors model **GRUPO** - CE marked

Premise

Sliding fire doors close large openings in the industrial sector. They are also used in smaller formats in the civil sector. Sliding doors are manufactured in several types to adapt precisely to the effective space available in the desired installation site. It must be said that EI sliding doors are heavy and not suitable for being opened several times a day. In case of frequent traffic, it is preferable to keep them normally open with holding electromagnets managed by smoke and heat detectors and they close by themselves due to the gravitational counterweights loaded manually while opening the leaves. The sliding fire doors are available EI 60, EI 90, EI 120, EI 180, EI 240, with 1 or 2 leaves and also opening telescopic on one side with 2 or 3 leaves. The walls have to be fire rated and appropriate for fixing and supporting the doors and the openings to have sufficient space on the 2 sides to place the counterweight and fully open the leaves. There should also be enough space above the opening to fix the rail and its covers to the wall or ceiling, the wall to be flush and unobstructed along its entire length and area affected by the closed and open leaves. The floor has to be level within tolerance along the entire width and opening range.

Sliding Industrial fire doors

Fire rated metal doors compliant with EN 16034 and EN 13241 standards, CE marked, for indoor use to be kept normally open or closed. Installation on rigid walls For installation on different or flexible walls ask more information as limits and availability may vary depending on the type chosen. Approximate weight of the doors 35 kg/m². No standard sizes are manufactured, all made upon demand.

Door leaves formed by insulating panels composed of two pre-painted steel sheets filled with fire resistant rock wool, total thickness of 100 mm with push-fit joints and fastened by screws partially in sight. Sheet metal frame around the perimeter of the panels forming the leaves. Recessed handles on the 2 sides without lock and keys. Sliding leaves without thresholds, the passage area is free from obstacles on floor, lower guide outside the clear opening.

Upper guide perforated for fixing with screws to the wall or ceiling using expansion plugs composed of a sliding system using steel carriages that slide on a special low-friction steel rail on which are hung the panels forming the leaves.

Counterweights including U-shaped containing box for the self-closing from the open position connected to the leaves by steel cables.

Labyrinths made of folded sheet metal for the fire-resistance placed at the edges.

Thermo-expanding gaskets placed on all the labyrinths and between the panels.

Accessories included: closing speed regulators, the end-of-stroke shock absorbers and normally also the electromagnet for keeping open the leaves.

Colors and different finishes. Light grey similar to RAL 7035 for the panels forming the leaves. Zinc-plated silver for the perimeter profiles of the leaves, the upper guide cover and the counterweight cover. Different colors available for quantities over 10 pieces per order and depending on their dimensions. To request, manufacture of doors with leaves and cover casing in AISI 304 or 316 stainless steel.

Pedestrian swing door optional on all EI 60 - EI 90 - EI 120 types, with a clear opening of 800 x 2000 mm, with handle set, lock and latch and fire resistant hinges openable to choice to push or to pull, color similar to RAL 7035. Optional panic bar, door closer, peephole. Wider pedestrian doors require a 58 mm high threshold.

Metal plate with certification data and CE marking affixed to the leaves in compliance with the provisions of the law. Documentation supplied: installation, use and maintenance instructions, DoP declaration of performance, declaration of conformity of the machinery directive.

Maximum dimensions wall opening in year 2026:

Single and double leaf EI 60 - EI 90 - EI 120 wall opening width 6385 x 5392 height.

Single and double leaf EI 180 wall opening width 4660 x 4605 height, max. area 13,84 sq.m.

Single leaf EI 240 wall opening width 4710 x 4605 height, max. area 13,84 sq.m.

Telescopic 2 or 3 leaves to one side EI 60 - EI 90 - EI 120 -EI 240 wall opening width 4710 x 4605 height, max. area 13,84 sq.m.

Data updated at the end of 2025, further dimensions and typologies are being extended, check for any updates.

Packing on disposable metal racks completely protected by heat shrink nylon.



Sliding Industrial Fire Doors model **GRUPO** - CE marked

Available types and their sliding clearances

The choice of sliding door type depends on the available lateral space beyond the wall opening.

Following the drawings of the available types, with examples of right-hand opening. The wall opening = clear opening dimensions are the red lines.

Sliding versions with ceiling-mounted rail are also available for all types, this reduces the clear opening height. Pedestrian doors can also be installed. Their types and positions are shown in the following page.

Detailed dimensions of clearances are contained in the product data sheets.

Single leaf with counterweight and closing profile in front Basic single leaf solution on straight walls

Straight wall passing through, sufficient space should be available in front for the closing profile + the counterweight and on opposite side to open completely the leaf. Basic single leaf solution.

Single leaf with counterweight on opposite side type OP1 Reduced protrusion of frame in front

In front there is a perpendicular wall to which the closing profile is fixed.

Sufficient space should be available on opposite side to contain the counterweight and open completely the leaf. The EI wall portion covering the closing profile can be created after installing the door.

Single leaf with counterweight on opposite side type OP2 Eliminated protrusion of frame in front

In front there is a perpendicular wall containing the closing profile positioned in a recessed niche.

Sufficient space should be available on opposite side to contain the counterweight and open completely the leaf. No need to create the wall coverage after installing the door.

Double leaf with 1 counterweight at left or right side. Basic double leaf solution on straight walls

Straight wall passing through, sufficient space should be available to open completely the leaves on both sides, one side including the counterweight. Asymmetric division possible.

Unique solution with 2 opposing leaves.

Sliding Industrial Fire Doors model **GRUPO** - CE marked

Telescopic one side with 2 overlapping leaves
Reduced space required on the opening side

Counterweight and enlarged closing profile in front.

Telescopic one side with 3 overlapping leaves
Minimum space required on the opening side

Counterweight and enlarged closing profile in front.

Ceiling fixing solution

Solution for fixing the door to the ceiling in case there is no wall above the opening to fix it. The net passage in height will be reduced 30 to 35 cm. depending on type of sliding door. The door will be supplied with an insulated top metal casing similar to the door panels concealing completely the sliding rail.

Pedestrian doors

Pedestrian doors can be inserted towards the closing side or towards the opening side of EI 60 – EI 90 – EI 120 sliding doors and can be with a pull or push opening and either right or left handed according to the attached diagrams. The standard clear opening is 800 x 2000 mm without the threshold, bigger size available with a threshold 58 mm. high. Supplied with handle set, lock and latch and fire rated hinges with self closing spring. Optional panic crossbars, door closer, peephole. Wider pedestrian doors require a 58 mm high threshold.

Vertical Sliding Fire Doors - CE marked

Premise

Vertical fire rated sliding doors, also called guillotines, are normally used in medium-small size openings such as windows, closures for industrial freight elevators, kitchens, conveyor belts, etc. to limit the spread of fire in the event of a fire.

They are also available in larger formats for openings up to 4,3 x 4,2 H meters or total 13,27 square meters.

Vertical sliding fire doors

EI2 120 fire-resistant vertical sliding metal door compliant with EN 16034 and EN 13241 standards, CE marked, to be kept normally open or closed. Door made with one or more modular panels in double sheet metal with a special fireproof panel in between, without lock, recessed handles on 2 sides. Adjustable balancing counterweights connected to the leaf. Fixed lateral labyrinths in press bent sheet metal, sliding on lateral guides and anti-friction flame arrester slides. Thermo-expanding gaskets placed on the labyrinths. Accessories normally included in the price: electromagnet (A in drawing), the stroke end shock absorber and the hydraulic stroke brake (B in drawing). Finishing with base coat

of thermoset epoxy polyester powders in RAL 7035 colour. Other RAL shades available to request. Metal plate with identification data affixed to the recessed handle in compliance with the provisions of the law. Documentation supplied: installation, use and maintenance instructions, DoP declaration of performance, declaration of conformity of the machinery directive or Declaration of Conformity and Ministerial Approval. Maximum dimensions: maximum area 13.27 m² and within measurements L 4.35 x 4.20 H. Approximate weight 50 kg/m². Packing on disposable metal racks completely protected by heat shrink nylon. Assembly to be carried out by specialized personnel.

HORIZONTAL SECTION

PROSPECTUS

VERTICAL SECTION



Large Hinged Industrial Fire Doors model **MAGNUM** - CE marked

Premise

The large fire doors hinged on vertical axes are installed as an alternative to the commercial fire doors which have size limits and to the industrial sliding doors when there is no space at side to open them. It must be said that large fire doors are heavy and not suitable for being opened and closed many times a day. In case of frequent traffic, it is advisable to keep them normally open, held by electromagnets.

Large hinged industrial fire doors

Large metal fire doors compliant with EN 16034 and EN 13241 standards, CE marked, to be kept normally open or closed, can be installed on masonry walls or plasterboard partitions equipped with an internal reinforcing metal structure. Frame 90 x 90 mm tubular press-bent or "Z" profiled steel profile of high resistance on 3 sides with holes for fixing with expansion bolts or screws (not included).

Doors composed of mechanically coupled modular panels 100 mm thick in double sheet metal with a fireproof core interposed, with 2 extra strong hinges per door or 3 if the dimensions require it. For automatic reclosing, 1 large hydraulic overhead door closer per leaf with adjustment of opening force, closing speed, final stroke. For very large door dimensions, a supplementary return spring or booster depending on the case. Guaranteed self-closing with doors open at 150°, self-closing to be checked for wider angle up to 180°. Thermo-expanding gaskets placed on the vertical sides of the frame, on the lower and upper heads of the leaf and in the central ledge of a 2-leaf door. Lock complete with cylinder and keys, handle with steel core covered in black nylon or stainless steel with plates.

The 2-leaf door also includes the closing regulator and in the secondary leaf insert counter-lock with self-locking device for closing in the frame at the top and in the socket at the bottom.

Doors made without floor thresholds. Finish with base coat with thermoset epoxy-polyester powders in RAL 7035 shade. Other RAL colours with surcharge. Metal plate with identification data and CE marking affixed on the leaves. Documentation supplied: installation instructions, use and maintenance instructions, DoP declaration of performance.

Approximate weight 40 to 50 kg/m². Packing on disposable racks. Assembly to be carried out by specialized staff.



Type of frames and fastenings

Z frame
normal fixing

Z frame fixing
beyond wall
opening

Z frame fixing
within wall
opening

Tubular frame
normal fixing

Tubular frame
fixing with help of
L-shaped profiles

Tubular frame
fixing within
wall opening

Optional accessories

Finish in colour of RAL range other than standard RAL 7035.

Electromagnets.

Lever or push panic crossbars.

Additional top and bottom rods and locks with lever handle, applied externally for greater resistance to air pressures.

Electric locks for access control.

Vision panels available in rectangular shape in version with corner "Z" frame only.

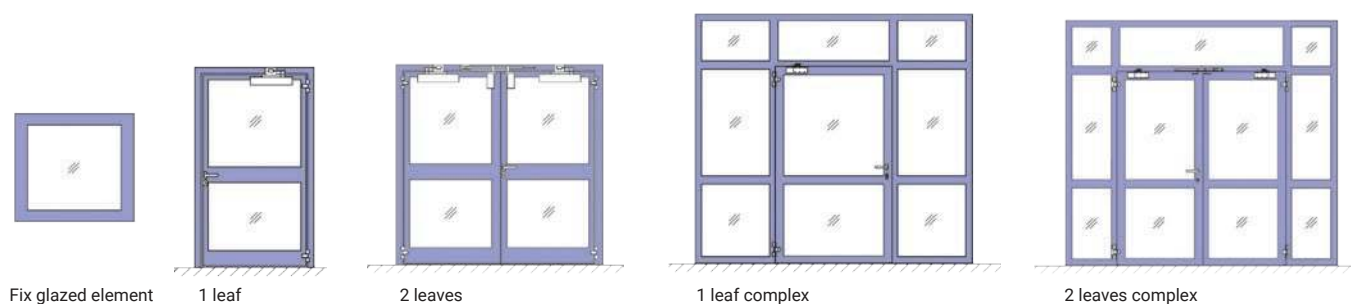
Glazed Fire Doors

GLASS FIRE DOORS with additional fire-proof performance certified for 30 - 60 - 90 - 120 minutes, made with steel or aluminium profiles with the smallest possible section, with the largest possible glass mirrors inserted to obtain shared aesthetic solutions that leave the maximum to transparency and infuse lightness and elegance to the observer. The profiles, in addition to being made of metal, are made up of special fire protection and insulation materials. The multi-layered glass is interspersed with transparent gels which become opaque and expand in the event of fire,

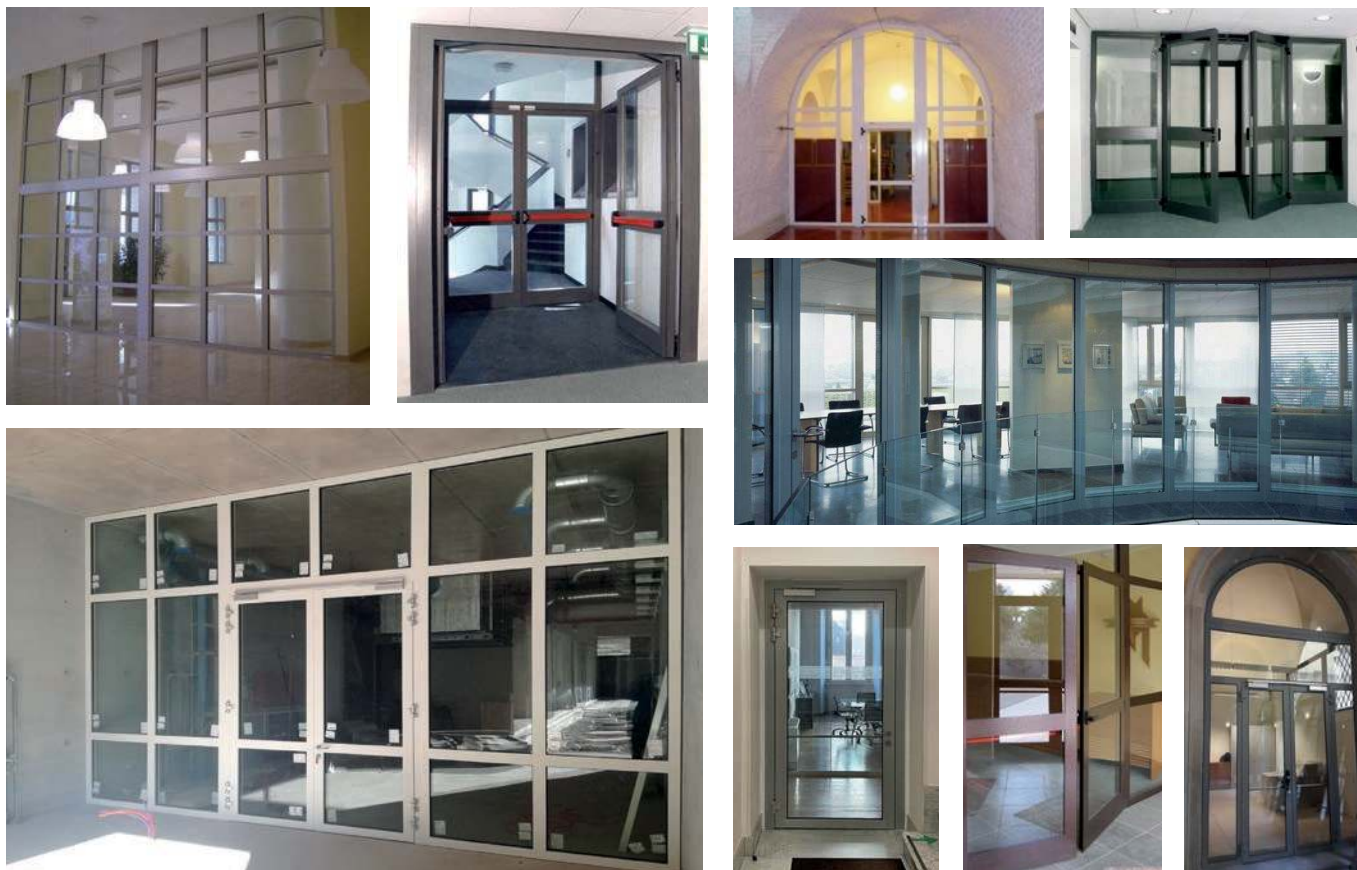
creating a barrier to flames and smoke and an insulating shield against the passage of heat. They are normally used for aesthetic reasons or the need for transparency in buildings such as banks, museums, public buildings, shopping centres, hotels, theatres, offices, restaurants, factories, sheds to compartmentalize halls, corridors, stairs, doors and windows adjacent to external emergency stairs, passageways, separations for meeting rooms or between offices and warehouses and similar situations.

Types available

- Glazed doors with 1 and 2 leaves, schematically shown below with or without side panels (complex) or fanlights, both glazed and solid

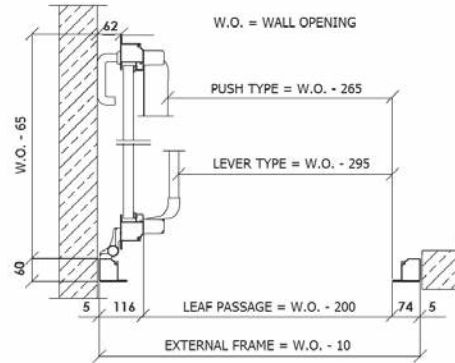
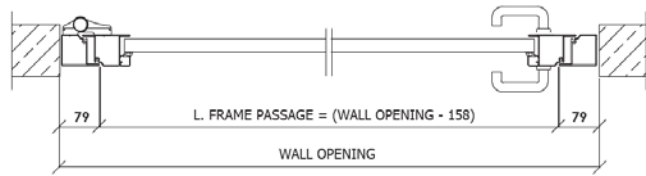


- 1 and 2-sash opening windows with 4-sided frame
- Fixed glazing with 1 or more glasses with 4-sided frame
- Window with transom opening



Range

- Steel profiles for interiors
EI30 – EI60 – EI90 – EI120
- Aluminium profiles for interiors
EI30 – EI60 – EI90 – EI120
- Aluminium profiles for exteriors
EI30 – EI60 – EI90 – EI120



Accessories included in the price

Standard finishes of the profiles: steel profiles in 10 colours to choose from, natural anodized aluminium profiles for interiors, aluminium profiles for exteriors in cream white RAL 9010, adjustable 3-wing hinges, overhead door closers, recessed lock with double stainless steel handle with plates and cylinder with keys, in the case of 2-leaf doors lock for the secondary leaf, 2 door closers, track-operated closing regulator and floor socket.

Optional accessories and finishes

Lever or push model panic exit devices in various colours or imitation stainless steel, wall and floor electromagnets, electric strikes or electro-handles. Finishing profiles with thermosetting powders in all the colours of the RAL range or bronze/black anodizing.

FIXING TYPES AVAILABLE

FRAME TYPE "L"
FLAT SUPPORT
WITHOUT WING

FRAME TYPE "Z"
WITH EXTERNAL WING

FRAME TYPE "T"
WITH INTERNAL WING

FIXING TO FLEXIBLE WALLS

FIXING ON
PLASTERBOARD
WALLS

FIXING ON WALLS
WITH CALCIUM SILICATE

FIXING ON INSULATED WALLS

DATA / PERFORMANCE Request specific reconfirmation, data may change without notice.	FOR INDOORS TEMPERATURE RANGE - 10% / +45° - NO WATER AND DIRECT SUN								FOR OUTDOORS			
	PROFILI IN ACCIAIO				PROFILI IN ALLUMINIO				PROFILI IN ALLUMINIO			
	EI30 STEEL	EI60 STEEL	EI90 STEEL	EI120 STEEL	EI30 ALUMINIUM	EI60 ALUMINIUM	EI90 ALUMINIUM	EI120 ALUMINIUM	EI30 ALUMINIUM	EI60 ALUMINIUM	EI90 ALUMINIUM	EI120 ALUMINIUM
TOTAL WINDOW THICKNESS mm.	60	60	80	80	74	79	94	104	75	75	89	89
TOTAL WEIGHT OF GLASS INCLUSIVE kg/m2.	45	60	95	115	50	70	95	115	50	65	80	100
ONLY GLASS THICKNESS mm.	16	25	38	50	16	25	38	50	32	41	48	51
THERMAL INSULATION Ug (W/m2k)	5,4	5,1	4,8	4,5	5,4	5,1	4,8	4,5	1,2	1,2	1,2	4,5*
NOISE REDUCTION (Rw-Db)	38	42	45	46	38	42	45	46	38	42	45	46
LIGHT TRANSMISSION %	85	81	76	71	85	81	76	71	76	72	67	61
REACTION TO FIRE	CLASS A1 ACCORDING TO EN 13501-1											
IMPACT RESISTANCE	CLASS 1/B/1 ACCORDING TO EN 12600											
THICKNESS AND DIMENSIONS TOLERANCES	ACCORDING TO EN 12543											
UV STABILITY	ACCORDING TO EN 12543-6											

* With sun protective film only

The **GLASS DOOR OFFER FORM** is available in the **DOWNLOAD** section on our website **WWW.ENDOORS.IT** to be filled in and sent to us when requesting an offer.

Endoors' Main References Years 2024 - 2025

Banque Zitouna Head Office - Tunisia

Fairmont Hotel In Rabat - Maroc

Lidl - The Biggest Logistic Platform - France

The Landmark In Nicosia - Cyprus

Msida Primary School - Island Of Malta

Prison In Sarajevo - Bosnia & Herzegovina

Tbilisi Hills Luxury Apartments - Georgia

Medex Oncology Hospital - Romania

Endoors' Main References Years 2010-2023

Akasya Mall - Istanbul

Ancon Tower - Panama

Antasya Residence - Istanbul

Bolshevik Mall - Kiev

Fairmont Hotel - Rabat

Inceneritor - Bolzano - Italy

Hospital San Gerardo - Milan

Grand Tower - Panama

Endoors' Main References Years 2010-2023

King's Avenue Mall - Cyprus

Titanium Tower - Panama

Nicosia Mall - Cyprus

Megapolis - Panama

Tunnel - Brescia - Italy

Q Tower - Panama

Tower Control - Algiers

Tocumen Airport - Panama

Vlas Resort - Bulgaria

Endoors' Main References Years 2010-2023

Bambu Shopping Centre - El Salvador

Hospital Bolnica Doboј - Bosnia and Herzegovina

Hospital Punta Pacifica - Panama

Icon Tower - Cyprus

Remedica Pharmaceutical - Cyprus

Ritz Carlton Residences - Cyprus

Soho Resort - Cyprus

Stadium in Tirana - Albania

“The Manufacturing ”



Production facilities

Endoors srl. has one production plant with outlying warehouse and offices located in Polesine Parmense / PARMA, in the middle of the northern part of Italy. The interaction with its 2 sister companies located in the south of Italy and abroad creates a synergy with consequent experience and improved performance. These activities work in favor of the product's quality and make Endoors srl. a specialist in the complete range of metallic fire rated shutters and give it the capability to compete successfully with the major names in Europe.



Machinery

The manufacturing facilities consist of a complete production line ending with very sophisticated varnishing machinery for the fabrication of metallic doors, shafts and general shutters and their components and accessories.

All of Endoors srl. production conforms to certified prototypes and the performance of single items are constant because they are surveyed and guaranteed by the quality system of very modern and technologically advanced equipment and innovative manufacturing procedures as per UNI – EN standards.

The factory is very flexible and can produce simultaneously, standard and custom-built fire rated and multipurpose doors in different colours and finishes, organise complex supplies by adding to its own products the traded products of the sister companies of the group like sliding gates and complete glazed doors, satisfying the needs of the clients who prefer a unique, active and reliable partner for its entire range of products.



Raw materials

Endoors srl. uses only top quality sheet metal and frame profiles as well as the best in components such as handles, locks, cylinders, hinges, self expanding gaskets and closing regulators. All metallic parts are completely galvanized. The door wings feature a fire resistant core of advanced technology material all studied and developed by Endoors srl. The quality of the raw materials is important. It influences the structural resistance and the fire rating performance of the final product which must be reliable. Tested prototypes have been submitted to compulsory hard slamming cycles, stress and fire tests.

The everyday production guarantees the continuity of the performance to the strict parameters of the new European standards for mechanical durability and fire resistance.

www.endoors.it

info@endoors.it